



3310-C Gilmore Industrial Boulevard
Louisville, Kentucky 40213

Phone (502) 964-8737
Facsimile (502) 964-1123

Facility Asbestos Inspection

Facility: 905 E. Oak **Inspection Date:** 7-13-10
Location: New Albany, Indiana **Inspector:** Pete Welsh

Micro-Analytics, Inc. conducted a facility asbestos inspection at the facility identified above on the date indicated. The asbestos inspection was performed in accordance with the EPA recommended protocol for a facility asbestos inspection.

During the site inspection, suspect asbestos-containing materials were grouped into homogeneous areas (HA's), with any given homogeneous area being a material exhibiting the same color, texture, and physical appearance. Each suspect homogeneous areas were then sampled in accordance with EPA protocol, and each sample collected was given a unique identification number.

Collected samples were then analyzed by an AIHA accredited laboratory using Polarized Light Microscopy (PLM) and the dispersion staining technique, which is the EPA-approved method for the analysis of bulk materials for the presence of asbestos.

This report summarizes the findings of the facility inspection. The report includes:

- An Asbestos Materials Summary Form, which details all of the asbestos-containing materials that were discovered during the inspection.
 - A Homogeneous Area Summary Form, which details all HA's that were identified during the inspection and includes both asbestos-containing materials and non-asbestos materials.
 - A Facility Drawing which shows locations of the samples collected and identifies the areas where asbestos materials are present in the facility.
 - A Bulk Analysis Report, which shows the analytical results from the laboratory for the PLM analysis.
-

Facility Asbestos Inspection – Summary of Homogeneous Areas

Facility: 905 E. Oak Street – Single Family Dwelling

Date of Inspection: 7-13-10

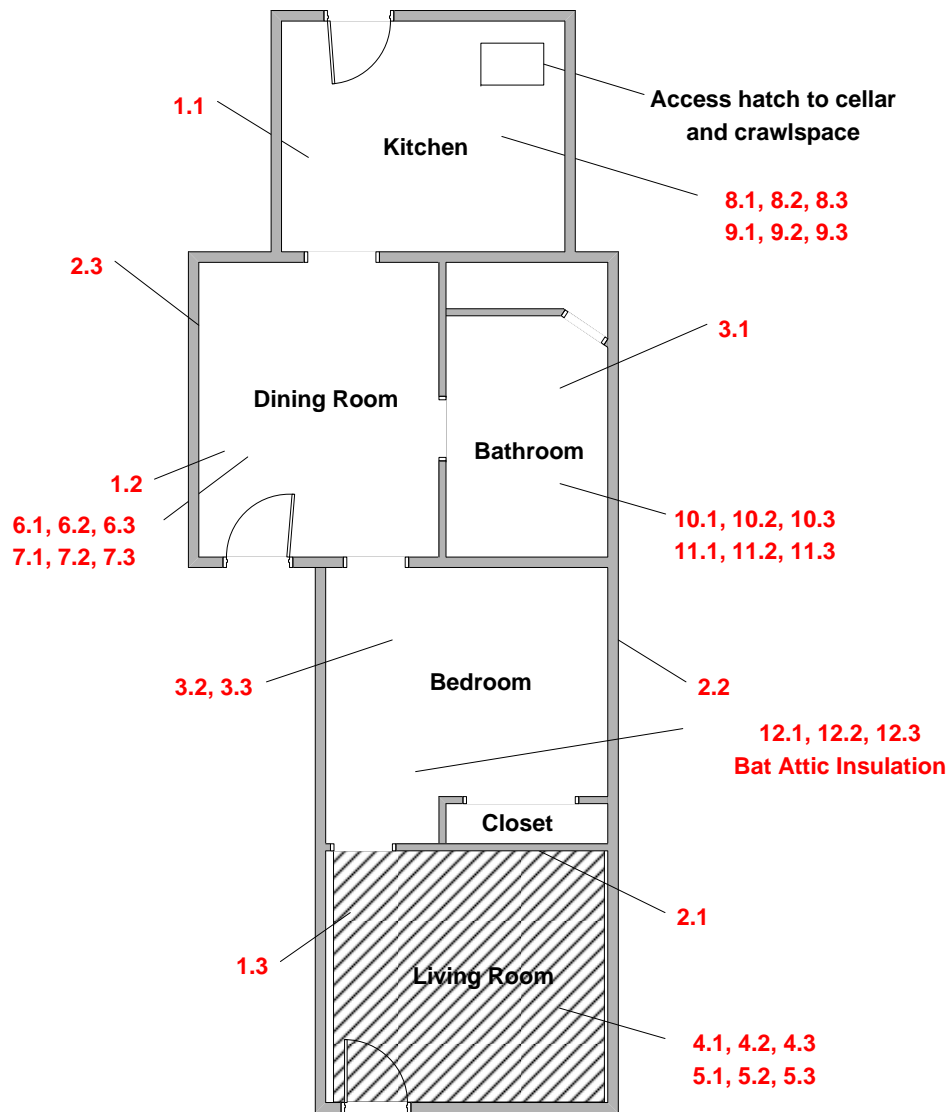
Location New Albany, Indiana

Inspector: Pete Welsh

HA No.	Material Type	Description	Locations of Material	Material Quantity	Sample Numbers	Is Asbestos Present?
01	Surfacing	Textured Ceiling	Kitchen, Dining Room, Living Room	520 S.F.	1.1, 1.2, 1.3	NAD
02	Surfacing	Wall Plaster	Throughout House	N/A	2.1, 2.2, 2.3	NAD
03	Misc	2' X 4' Lay-in Ceiling Tile	Bathroom, Bedroom	280 S.F.	3.1, 3.2, 3.3	NAD
04	Misc	9" Floor Tile	Living Room	170 S.F.	4.1, 4.2, 4.3	Chrysotile 5-7%
05	Misc	Mastic under 9" Floor Tile	Living Room	170 S.F.	5.1, 5.2, 5.3	Chrysotile 2-3%
06	Misc	Linoleum – Top Layer	Dining Room	200 S.F.	6.1, 6.2, 6.3	NAD
07	Misc	Linoleum – Bottom Layer	Dining Room	200 S.F.	7.1, 7.2, 7.3	NAD
08	Misc	Linoleum – Top Layer	Kitchen	150 S.F.	8.1, 8.2, 8.3	NAD
09	Misc	Linoleum – Bottom Layer	Kitchen	150 S.F.	9.1, 9.2, 9.3	NAD
10	Misc	Linoleum – Top Layer	Bathroom	80 S.F.	10.1, 10.2, 10.3	NAD
11	Misc	Linoleum – Bottom Layer	Bathroom	80 S.F.	11.1, 11.2, 11.3	NAD
12	Misc	Bat Insulation	Attic	N/A	12.1, 12.2, 12.3	NAD

Facility Asbestos Inspection – Summary of Homogeneous Areas

13	Misc	Roofing Shingle-first layer	Roof	N/A	13.1, 13.2, 13.3	NAD
14	Misc	Roofing Shingle-second layer	Roof	N/A	14.1, 14.2, 14.3	NAD
15	Misc	Roofing Felt	Roof	N/A	15.1, 15.2, 15.3	NAD
16	Misc	Chimney Mastic	Roof	8 S.F.	16.1, 16.2, 16.3	Chrysotile 10-12%



**905 E. Oak Street
New Albany, Indiana**

**Facility Asbestos Inspection
July 13, 2010**

Legend:



Asbestos floor tile & mastic

##

Sample Number & Location

MRS Analytical Laboratory, Inc.

Bulk Asbestos Report

Project Number: 62833 **Date Received:** 07/13/2010
Client: New Directions Housing Corporation **Date Reported:** 07/14/2010
Facility: 905 East Oak Street **Analysis Date:** 07/14/2010
Sample Type: Bulk Material **Analyst:** J. Holley
Date Sampled: 07/13/2010 **Sampled By:** P. Welsh

TEST DESCRIPTION: Analysis of Bulk Material for Asbestos.

ANALYTICAL METHOD: Polarized Light Microscopy with Dispersion Staining as Defined in 40 CFR, Part 763, Subpart F, Appendix A.

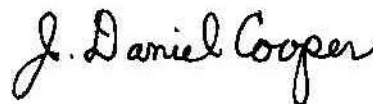
<i>Micro-Analytcs Sample Number</i>	<i>Client Sample Number and Laboratory Gross Description</i>	<i>Type and Percent Asbestos</i>
1.1	Textured ceiling – Kitchen	NAD
1.2	Textured ceiling – Dining room	NAD
1.3	Textured ceiling – Living room	NAD
2.1	Plaster wall – Living room	NAD
2.2	Plaster wall – Bedroom	NAD
2.3	Plaster wall – dining room	NAD
3.1	2x4 Lay-in Ceiling – Bathroom	NAD
3.2	2x4 Lay-in Ceiling – Bedroom	NAD
3.3	2x4 Lay-in Ceiling – Bedroom	NAD
4.1	9” Floor tile – Living room	5-7% Chrysotile
4.2	9” Floor tile	5-7% Chrysotile
4.3	9” Floor tile	5-7% Chrysotile
5.1	Mastic under 9” floor tile – Living room	2-3% Chrysotile
5.2	Mastic under 9” floor tile	2-3% Chrysotile
5.3	Mastic under 9” floor tile	2-3% Chrysotile
6.1	Linoleum – top – Dining room	NAD
6.2	Linoleum – top – Dining room	NAD
6.3	Linoleum – top – Dining room	NAD
7.1	Linoleum – bottom – Dining room	NAD
7.2	Linoleum – bottom – Dining room	NAD
7.3	Linoleum – bottom – Dining room	NAD

Reporting Limit 1% Asbestos

NAD: No Asbestos Detected

MRS Analytical Laboratory, Inc., is accredited and certified Proficient by the American Industrial Hygiene Association – Accreditation Number: AIHA-102459

Reviewed by Authorized Signatory



MRS Analytical Laboratory, Inc.

Bulk Asbestos Report

Project Number: 62833 **Date Received:** 07/13/2010
Client: New Directions Housing Corporation **Date Reported:** 07/14/2010
Facility: 905 East Oak Street **Analysis Date:** 07/14/2010
Sample Type: Bulk Material **Analyst:** J. Holley
Date Sampled: 07/13/2010 **Sampled By:** P. Welsh

TEST DESCRIPTION: Analysis of Bulk Material for Asbestos.

ANALYTICAL METHOD: Polarized Light Microscopy with Dispersion Staining as Defined in 40 CFR, Part 763, Subpart F, Appendix A.

<i>Micro-Analytcs Sample Number</i>	<i>Client Sample Number and Laboratory Gross Description</i>	<i>Type and Percent Asbestos</i>
8.1	Linoleum – top – Kitchen	NAD
8.2	Linoleum – top – Kitchen	NAD
8.3	Linoleum – top – Kitchen	NAD
9.1	Linoleum – bottom – Kitchen	NAD
9.2	Linoleum – bottom – Kitchen	NAD
9.3	Linoleum – bottom – Kitchen	NAD
10.1	Linoleum – top – Bathroom	NAD
10.2	Linoleum – top – Bathroom	NAD
10.3	Linoleum – top – Bathroom	NAD
11.1	Linoleum – bottom – Bathroom	NAD
11.2	Linoleum – bottom – Bathroom	NAD
11.3	Linoleum – bottom – Bathroom	NAD
12.1	Batt insulation – Attic	NAD
12.2	Batt insulation – Attic	NAD
12.3	Batt insulation – Attic	NAD
13.1	Roofing Shingle First Layer	NAD
13.2	Roofing Shingle First Layer	NAD
13.3	Roofing Shingle First Layer	NAD
14.1	Roofing shingle Second Layer	NAD
14.2	Roofing shingle Second Layer	NAD

Reporting Limit 1% Asbestos

NAD: No Asbestos Detected

MRS Analytical Laboratory, Inc., is accredited and certified Proficient by the American Industrial Hygiene Association – Accreditation Number: AIHA-102459

Reviewed by Authorized Signatory

