



3310-C Gilmore Industrial Boulevard  
Louisville, Kentucky 40213

Phone (502) 964-8737  
Facsimile (502) 964-1123

## Facility Asbestos Inspection

**Facility:** 323 E. 12<sup>th</sup> Street      **Inspection Date:** 8/4/2010  
**Location:** New Albany, IN      **Inspector:** Welsh, Pete

Micro-Analytics, Inc. conducted a facility asbestos inspection at the facility identified above on the date indicated. The asbestos inspection was performed in accordance with the EPA recommended protocol for a facility asbestos inspection.

During the site inspection, suspect asbestos-containing materials were grouped into homogeneous areas (HA's), with any given homogeneous area being a material exhibiting the same color, texture, and physical appearance. Each suspect homogeneous areas were then sampled in accordance with EPA protocol, and each sample collected was given a unique identification number.

Collected samples were then analyzed by an AIHA accredited laboratory using Polarized Light Microscopy (PLM) and the dispersion staining technique, which is the EPA-approved method for the analysis of bulk materials for the presence of asbestos.

This report summarizes the findings of the facility inspection. The report includes:

- An Asbestos Materials Summary Form, which details all of the asbestos-containing materials that were discovered during the inspection.
  - A Homogeneous Area Summary Form, which details all HA's that were identified during the inspection and includes both asbestos-containing materials and non-asbestos materials.
  - A Facility Drawing which shows locations of the samples collected and identifies the areas where asbestos materials are present in the facility.
  - A Bulk Analysis Report, which shows the analytical results from the laboratory for the PLM analysis.
-

## Facility Asbestos Inspection – Summary of Asbestos-Containing Materials

Facility: 323 E. 12<sup>th</sup> Street

Date of Inspection: 8/4/2010

Location New Albany, IN

Inspector: Welsh, Pete

HA No.	Material Type	Description	Locations of Material	Material Quantity (ft <sup>2</sup> )	Condition of ACM	Asbestos Type and Percent
04	Misc.	Floor Sheeting	Living Room	4	Good	10-12% Chrysotile

## Facility Asbestos Inspection – Summary of Homogeneous Areas

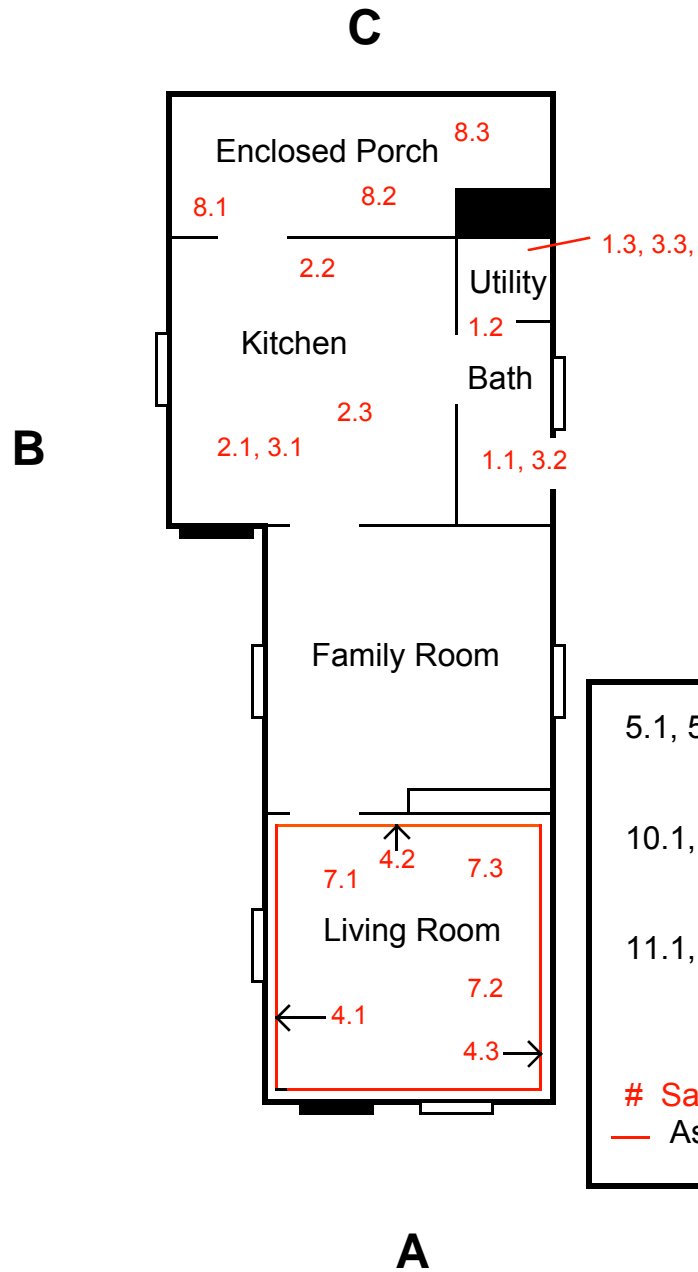
Facility: 323 E. 12<sup>th</sup> Street

Date of Inspection: 8/4/2010

Location New Albany, IN

Inspector: Welsh, Pete

HA No.	Material Type	Description	Locations of Material	Material Quantity (ft <sup>2</sup> )	Sample Numbers	Is Asbestos Present?
01	Misc.	Floor Sheeting	Bathroom, Utility, lower level	48	01	NAD
02	Misc.	Floor Sheeting	Kitchen, lower layer	144	02	NAD
03	Misc.	Floor Sheeting	Kitchen, Bathroom, Utility, top layer	192	03	NAD
04	Misc.	Floor Sheeting	Living Room	4	04	Yes
05	Misc.	Wall Plaster	Throughout		05	NAD
06	Misc.	Drywall Mud	Throughout		06	NAD
07	Misc.	Popcorn Ceiling	Living Room	144	07	NAD
08	Misc.	Ceiling Tile	Enclosed Porch	96	08	NAD
09	Misc.	Window Glazing	Exterior		09	NAD
10	Misc.	Shingle	Main Building Roof	1000	10	NAD
11	Misc.	Shingle	Outbuilding Roof (top layer)	400	11	NAD
12	Misc.	Shingle	Outbuilding Roof (lower layer)	400	12	NAD



5.1, 5.2, 5.3, 6.1, 6.2, 6.3- Plaster Samples and Drywall Samples Taken Throughout

10.1, 10.2, 10.3- Roof Samples Taken Along Exterior Roof of Main Building

11.1, 11.2, 11.3, 12.1, 12.2, 12.3- Roof Samples Taken Along Exterior of Outbuilding Roof

# Sample Location and Number

— Asbestos Containing Material

# MRS Analytical Laboratory, Inc.

## Bulk Asbestos Report

**Project Number:** 62833 **Date Received:** 8/4/2010  
**Client:** New Directions Housing Corporation **Date Reported:** 8/5/2010  
**Facility:** 323 E. 12<sup>th</sup> Street, New Albany, IN **Analysis Date:** 8/5/2010  
**Sample Type:** Bulk Material **Analyst:** J. Holley  
**Date Sampled:** 8/4/2010 **Sampled By:** P. Welsh

**TEST DESCRIPTION:** Analysis of Bulk Material for Asbestos.

**ANALYTICAL METHOD:** Polarized Light Microscopy with Dispersion Staining as Defined in 40 CFR, Part 763, Subpart F, Appendix A.

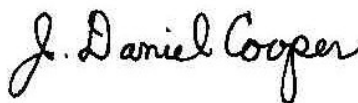
<i>Micro-Analytcs Sample Number</i>	<i>Client Sample Number and Laboratory Gross Description</i>	<i>Type and Percent Asbestos</i>
1.1	Floor sheeting	NAD
1.2	Floor sheeting	NAD
1.3	Floor sheeting	NAD
2.1	Floor sheeting	NAD
2.2	Floor sheeting	NAD
2.3	Floor sheeting	NAD
3.1	Floor sheeting	NAD
3.2	Floor sheeting	NAD
3.3	Floor sheeting	NAD
4.1	Floor sheeting	10-12% Chrysotile
4.2	Floor sheeting	10-12% Chrysotile
4.3	Floor sheeting	10-12% Chrysotile
5.1	Plaster	NAD
5.2	Plaster	NAD
5.3	Plaster	NAD
6.1	Drywall/mud	NAD
6.2	Drywall/mud	NAD
6.3	Drywall/mud	NAD

**Reporting Limit** 1% Asbestos

**NAD:** No Asbestos Detected

MRS Analytical Laboratory, Inc., is accredited and certified Proficient by the American Industrial Hygiene Association – Accreditation Number: AIHA-102459

Reviewed by Authorized Signatory



# MRS Analytical Laboratory, Inc.

## Bulk Asbestos Report

**Project Number:** 62833 **Date Received:** 8/4/2010  
**Client:** New Directions Housing Corporation **Date Reported:** 8/5/2010  
**Facility:** 323 E. 12<sup>th</sup> Street, New Albany, IN **Analysis Date:** 8/5/2010  
**Sample Type:** Bulk Material **Analyst:** J. Holley  
**Date Sampled:** 8/4/2010 **Sampled By:** P. Welsh

**TEST DESCRIPTION:** Analysis of Bulk Material for Asbestos.

**ANALYTICAL METHOD:** Polarized Light Microscopy with Dispersion Staining as Defined in 40 CFR, Part 763, Subpart F, Appendix A.

<i>Micro-Analytics Sample Number</i>	<i>Client Sample Number and Laboratory Gross Description</i>	<i>Type and Percent Asbestos</i>
7.1	Textured Ceiling	NAD
7.2	Textured Ceiling	NAD
7.3	Textured Ceiling	NAD
8.1	Ceiling Tile	NAD
8.2	Ceiling Tile	NAD
8.3	Ceiling Tile	NAD
9.1	Window Glazing	NAD
9.2	Window Glazing	NAD
9.3	Window Glazing	NAD
10.1	Shingle	NAD
10.2	Shingle	NAD
10.3	Shingle	NAD
11.1	Shingle	NAD
11.2	Shingle	NAD
11.3	Shingle	NAD
12.1	Shingle	NAD
12.2	Shingle	NAD
12.3	Shingle	NAD

**Reporting Limit** 1% Asbestos

**NAD:** No Asbestos Detected

MRS Analytical Laboratory, Inc., is accredited and certified Proficient by the American Industrial Hygiene Association – Accreditation Number: AIHA-102459

Reviewed by Authorized Signatory

