



3310-C Gilmore Industrial Boulevard
Louisville, Kentucky 40213

Phone (502) 964-8737
Facsimile (502) 964-1123

Facility Asbestos Inspection

Facility: 315 E. 14th Street **Inspection Date:** 6-28-10
Location: New Albany, Indiana **Inspector:** Pete Welsh

Micro-Analytics, Inc. conducted a facility asbestos inspection at the facility identified above on the date indicated. The asbestos inspection was performed in accordance with the EPA recommended protocol for a facility asbestos inspection.

During the site inspection, suspect asbestos-containing materials were grouped into homogeneous areas (HA's), with any given homogeneous area being a material exhibiting the same color, texture, and physical appearance. Each suspect homogeneous area was then sampled in accordance with EPA protocol, and each sample collected was given a unique identification number.

Collected samples were then analyzed by an AIHA accredited laboratory using Polarized Light Microscopy (PLM) and the dispersion staining technique, which is the EPA-approved method for the analysis of bulk materials for the presence of asbestos.

This report summarizes the findings of the facility inspection. The report includes:

- An Asbestos Materials Summary Form, which details all of the asbestos-containing materials that were discovered during the inspection.
 - A Homogeneous Area Summary Form, which details all HA's that were identified during the inspection and includes both asbestos-containing materials and non-asbestos materials.
 - A Facility Drawing which shows locations of the samples collected and identifies the areas where asbestos materials are present in the facility.
 - A Bulk Analysis Report, which shows the analytical results from the laboratory for the PLM analysis.
-

Facility Asbestos Inspection – Summary of Homogeneous Areas

Facility: 315 East 14th Street Single Family Dwelling

Date of Inspection: 6-28-10

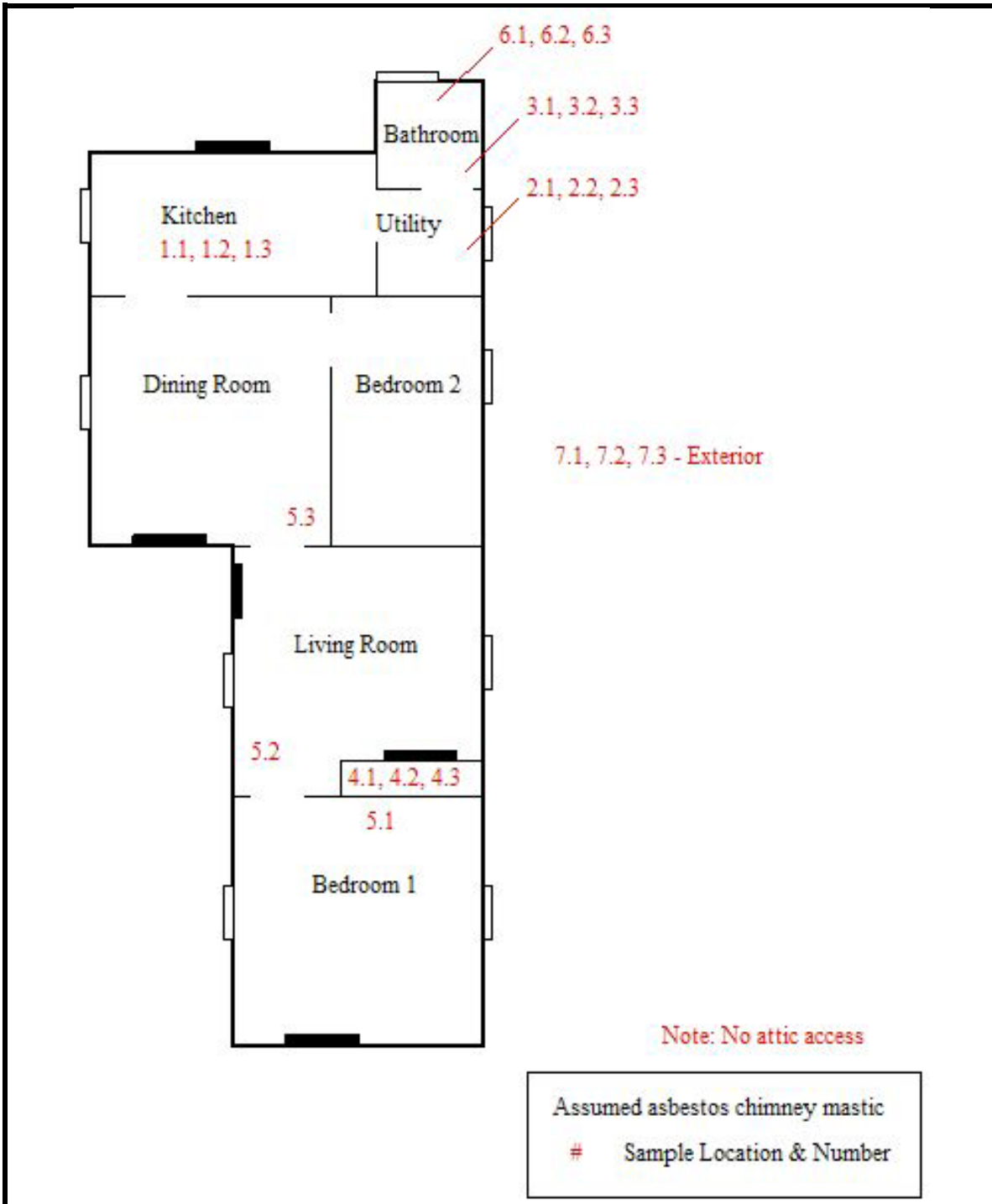
Location New Albany, Indiana

Inspector: Pete Welsh

HA No.	Description	Locations of Material	Material Type	Material Quantity	Sample Numbers	Is Asbestos Present?
01	12" Floor tile (self-adhesive)	Kitchen	Misc	N/A	1.1 – 1.3	No ACM
02	Linoleum – 12" pattern	Utility room	Misc	N/A	2.1 – 2.3	No ACM
03	Linoleum – 9" pattern	Bathroom	Misc	N/A	3.1 – 3.3	No ACM
04	Linoleum	Living room closet	Misc	N/A	4.1 – 4.3	No ACM
05	Plaster	Throughout	Misc	N/A	5.1 - -5.3	No ACM
06	Drywall/mud compound	Bathroom	Misc	N/A	6.1 – 6.3	No ACM
07	Window caulk/glazing	Exterior	Misc	N/A	7.1 – 7.3	No ACM
08	Chimney mastic	Roof	Misc	N/A	N/A	Assumed ACM

No Asbestos-Containing Building materials were identified in this house.

Floor Plan Drawings



Micro-Analytics, Inc.
 3310-C Gilmore Industrial
 Blvd.
 Louisville, KY 40213
 (502)964-8737

315 East 14th Street, New Albany, IN

Project #	Drawn by	Scale	Date
62833	N. Leow	NTS	July 1, 2010

MRS Analytical Laboratory, Inc.

Bulk Asbestos Report

Project Number: 62833 Date Received: 06/30/2010
Client: New Directions Housing Corporation Date Reported: 06/30/2010
Facility: 315 E. 14th Street, New Albany Analysis Date: 06/30/2010
Sample Type: Bulk Material Analyst: J. Holley
Date Sampled: 06/30/2010 Sampled By: P. Welsh/N. Leow

TEST DESCRIPTION: Analysis of Bulk Material for Asbestos.

ANALYTICAL METHOD: Polarized Light Microscopy with Dispersion Staining as Defined in 40 CFR, Part 763, Subpart F, Appendix A.

<i>Micro-Analytcs Sample Number</i>	<i>Client Sample Number and Laboratory Gross Description</i>	<i>Type and Percent Asbestos</i>
1.1	12" Floor tile (self adhesive)	NAD
1.2	12" Floor tile (self adhesive)	NAD
1.3	12" Floor tile (self adhesive)	NAD
2.1	Linoleum	NAD
2.2	Linoleum	NAD
2.3	Linoleum	NAD
3.1	Linoleum	NAD
3.2	Linoleum	NAD
3.3	Linoleum	NAD
4.1	Linoleum	NAD
4.2	Linoleum	NAD
4.3	Linoleum	NAD
5.1	Plaster – top – white	NAD
	Plaster – bottom – gray	NAD
5.2	Plaster – top – white	NAD
	Plaster – bottom – gray	NAD
5.3	Plaster – top – white	NAD
	Plaster – bottom – gray	NAD
6.1	Drywall/mud compound	NAD
6.2	Drywall/mud compound	NAD

Reporting Limit 1% Asbestos

NAD: No Asbestos Detected

MRS Analytical Laboratory, Inc., is accredited and certified Proficient by the American Industrial Hygiene Association – Accreditation Number: AIHA-102459

Reviewed by Authorized Signatory



